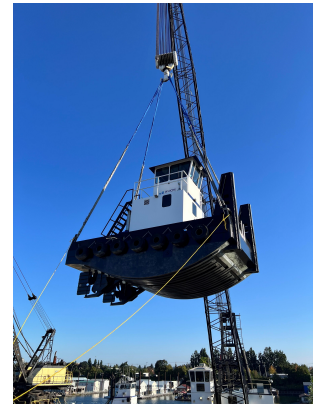


TUG "RUSTLER" 25' TWIN SCREW TUG

Official No. 1344804



Dimensions:

- **Length:** 25.11'
- **Beam:** 14'
- **Depth:** 5'
- **Draft:** Approx. 4'
- **Eye Level:** Approx. 14' 9" above waterline

Weight:

- Approx. 34,000 lbs (dry)
- Approx. 40,000 lbs (w/ fuel & fluids)

Capacities:

- **Fuel:** 700 GAL total / DIESEL
- 350 GAL per engine, separate tanks
- **Cooling:** Keel cooled, one system per engine

Vessel Uses:

- Marine Construction
- Tugboat / Push Boat
- Work Boat
- Shuttle / Material Ferry
- Crew Boat

Machinery:

- Twin Cummins QSB 6.7
- **Power:** 600 HP total (300 HP each) Tier 3
- **Transmission:** Twin Disk MG-5075SC Marine
- **Steering:** Non Follow-Up Hydraulic

Propulsion:

- **Prop Shafts:** 2.5" Dia. Stainless Steel w/ PSS Shaft Seals

Rudders:

- 5/8" thick steel plate w/ welded fencing, 1.75" shafts

Flanking Rudders:

- 40° pivot angle
- 2.5" 1045 carbon steel shafts
- 1/2" A36 plate rudder stock
- Tides Marine bearings & bushings

Deck & Structure:

- 4 crane lifting lugs at corners
- Push knees 4' 2" above deck w/ rubber bumpers
- Truckable Tug

Pilot House (Texas Deck Style):

- Approx. 5'W x 7'T x 5'10"L, two-man cab
- 2 sliding side windows, rear access door
- Top hinge partial swing-out front window



PO Box 61945 Vancouver, WA 98666
1835 N Marine Drive Portland, OR 97217

Phone: 503-314-2014
E-mail: kurt@axiosmarinellc.com
Website: www.axiosmarinellc.com

See more photos and videos of our equipment on our website.